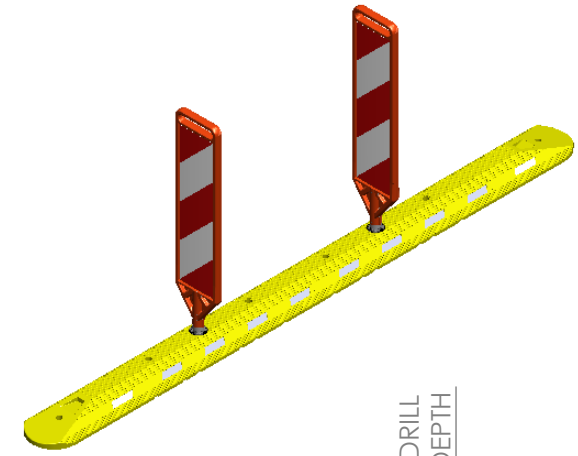
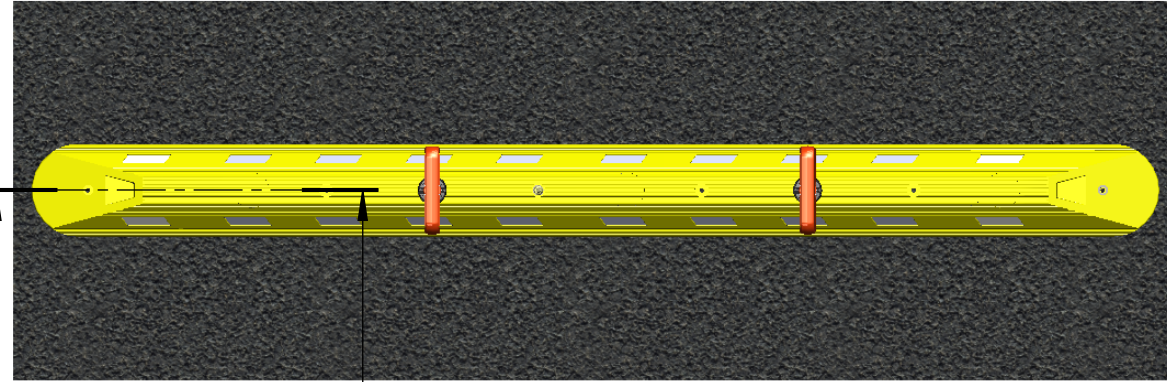
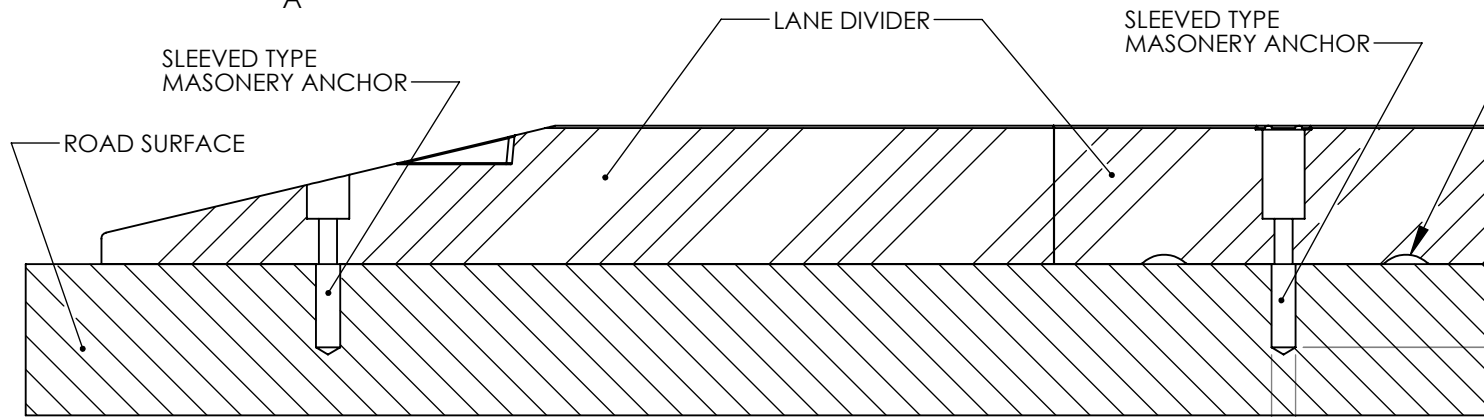


FULL INSTALLATION DETAILS CAN BE FOUND ON OUR JMB INFORMATION SHEET - "JMB LANE DIVIDER SYSTEM: INSTALLATION" available on the technical/Installations page at www.jmbsignposts.com



SECTION A-A



MARK THE DRILL WITH THIS DEPTH

DRILL TO MANUFACTURES RECOMMENDED ENGAGEMENT DEPTH (SEE BELOW FOR GENERAL INFORMATION)

BRIEF GUIDELINES FOR FITTING LANE DIVIDERS

(Anchor Manufacturers instructions and local regulations should always take precedent over these installation guidelines)

1. LAY DOWN DIVIDER ELEMENTS STARTING AT THE FEAMLE END SEGMENT. LAY IN THE DIRECTION OF TRAFFIC
2. DRILL HOLES THROUGH DIVIDER TO THE CORRECT DEPTH
3. CLEAN DUST OUT OF THE HOLES
4. TAP THE ANCHOR BOLTS THROUGH THE BASE HOLES USING A SOFT HAMMER
5. TIGHTEN THE NUTS TO RECOMMENDED TORQUE

TIP: FIT BOLTS AS YOU DRILL THE HOLES TO PREVENT HOLE MISALIGNMENT DUE TO TEMPERATURE EXPANSION AND CONTRACTION ON LONG DIVIDER SEGMENTS

NOTE: FURTHER INSTALLATION DETAILS CAN BE FOUND ON OUR JMB INFORMATION SHEET - "JMB LANE DIVIDER SYSTEM: INSTALLATION" available on the technical/Installations page at www.jmbsignposts.com

Ø 12 SLEEVED ANCHOR
Ø 12 SCREW IN ANCHOR

General Information Sleeved Anchors:

ANCHOR: Ø 12 x 100 (M10 Thread)
Drill Hole: Ø 12 x 95
Tightening Torque - 55Nm

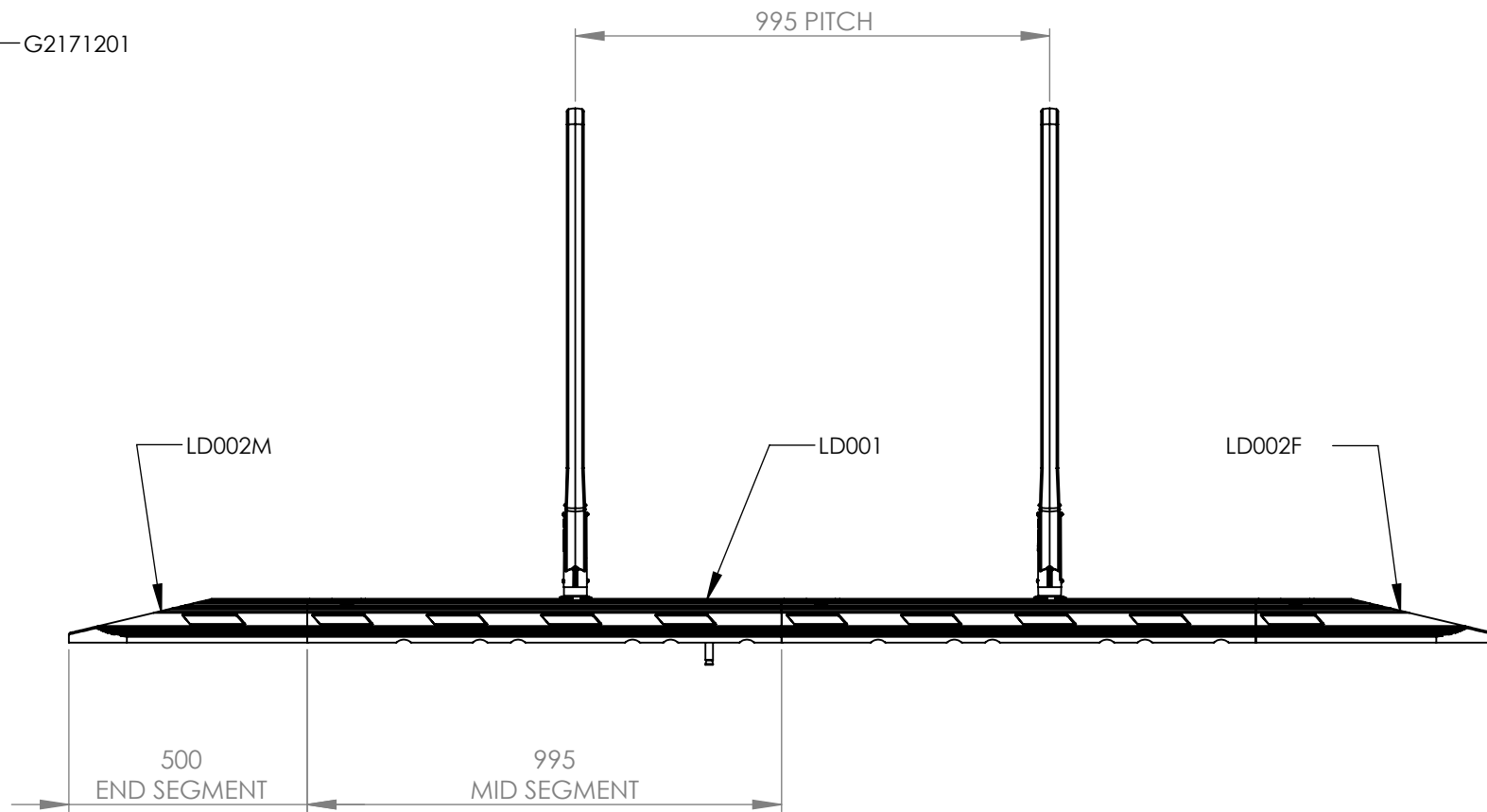
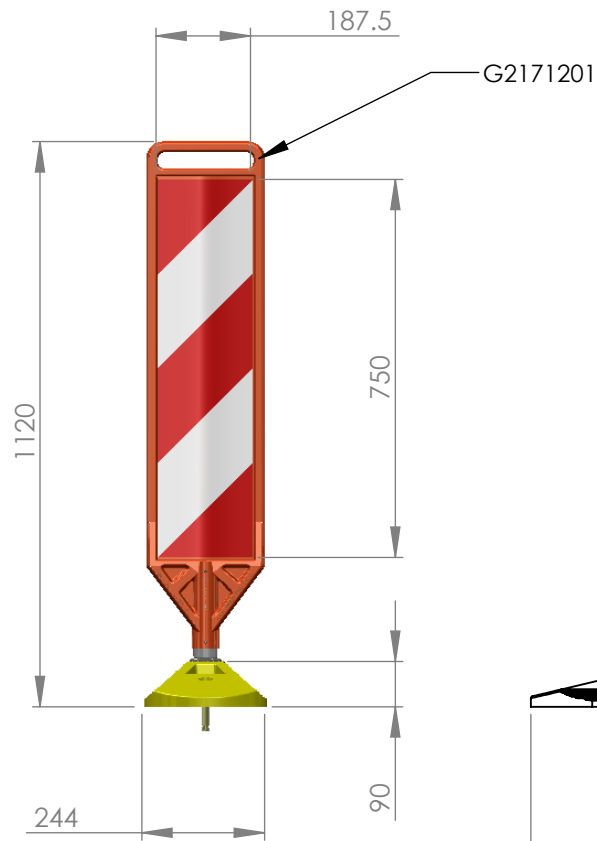
General Information Screw In Anchors:

ANCHOR: M12 x 100
Drill Hole: Ø 12 x 100 (depth into road surface)
Tightening Torque - 80Nm

SCALE	NTS
CHECKED	ICB
LAST UPDATE	25/05/2015
DRAWN	Ian Brodie
DATE	07/07/2014

ALL DIMENSIONS IN MILLIMETERS	QUANTITY	1	DO NOT SCALE IF IN DOUBT ASK
	MATERIAL	NA	
	FINISH	NA	
DESCRIPTION		SPRING RETURN LANE DIVIDER SYSTEM TECHNICAL INFORMATION SHEET 1 GENERAL MOUNTING INSTRUCTIONS	

JMB MANUFACTURING PTY LTD 24 BRIGID BOULEVARD AUSTINE HEIGHTS QLD AUSTRALIA 4300 PH. 07 3814 7882 FAX. 07 3814 7884		
ACAD FILE NAME	SH. 1	
Part: Tech Drawing Lane Divider Assembly	OF 51	



SCALE	NTS
CHECKED	ICB
LAST UPDATE	25/05/2015
DRAWN	Ian Brodie
DATE	07/07/2014

ALL DIMENSIONS IN MILLIMETERS	QUANTITY	1	DO NOT SCALE IF IN DOUBT ASK
MATERIAL	NA		
FINISH	NA		
DESCRIPTION	SPRING RETURN LANE DIVIDER SYSTEM TECHNICAL INFORMATION SHEET 2 GENERAL DIMENSIONS		

JMB MANUFACTURING PTY LTD
 24 BRIGID BOULEVARD
 AUSTINE HEIGHTS
 QLD AUSTRALIA 4300
 PH. 07 3814 7882
 FAX. 07 3814 7884



ACAD FILE NAME
 Generation 2 Products -Technical Information

Part: Tech Drawing Lane Divider Assembly

SH. 2