

JMB Lane Divider System: Installation Instructions

The JMB Lane Divider is designed for installing generally on flat asphalt or concrete. Installation may not be as effective on dirt roads.

1) Safety

Always use traffic control appropriate to the location to make the work area safe for installation

2) Prepare the Site

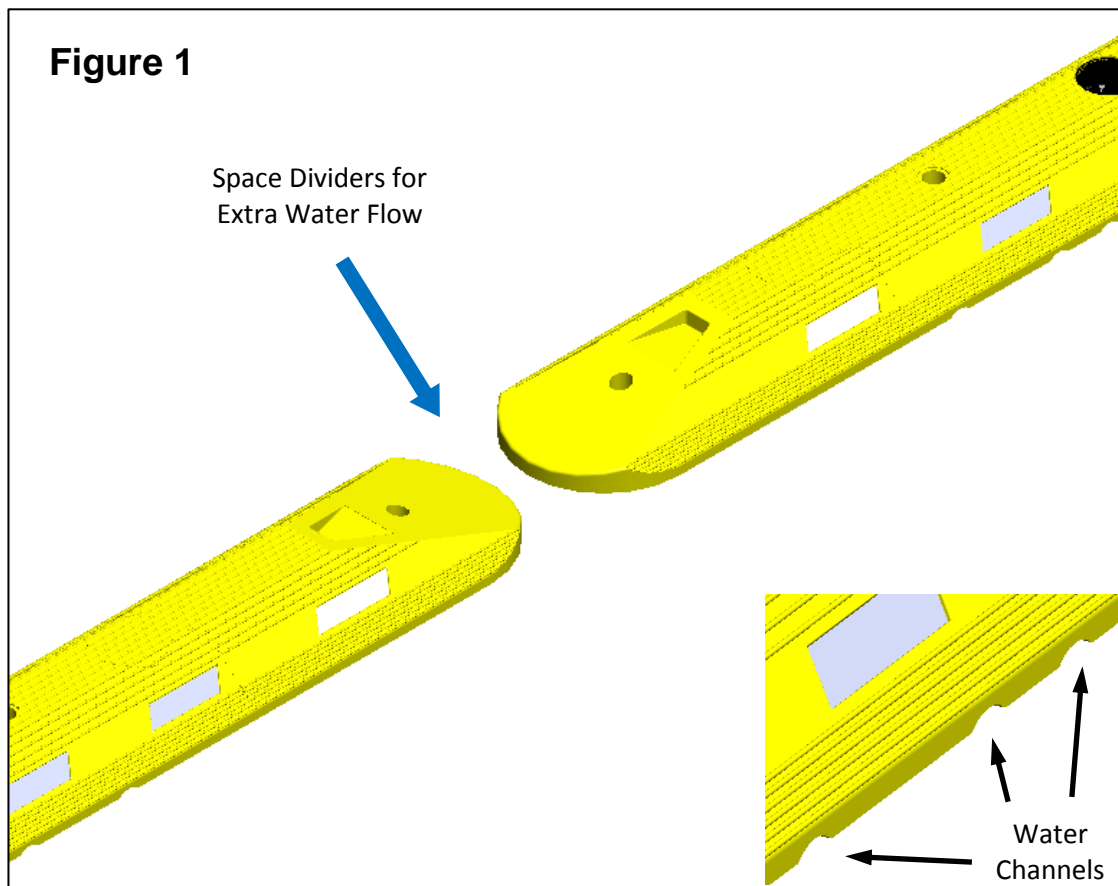
Use a stiff broom or similar to remove sand, gravel and other debris off the roadway

Use a chalk line or string to make an edge for the dividers to follow.

3) Spacing for Water Flow

Water channels are already a feature of the JMB lane dividers. Refer to Figure 1

However if additional water flow is required due to regional or road conditions, extra water channelling may be created by breaking the continuous divider line and installing 2 end pieces separated by 50mm to 100mm. Refer Figure 1



JMB Lane Divider System: Installation Instructions cont.

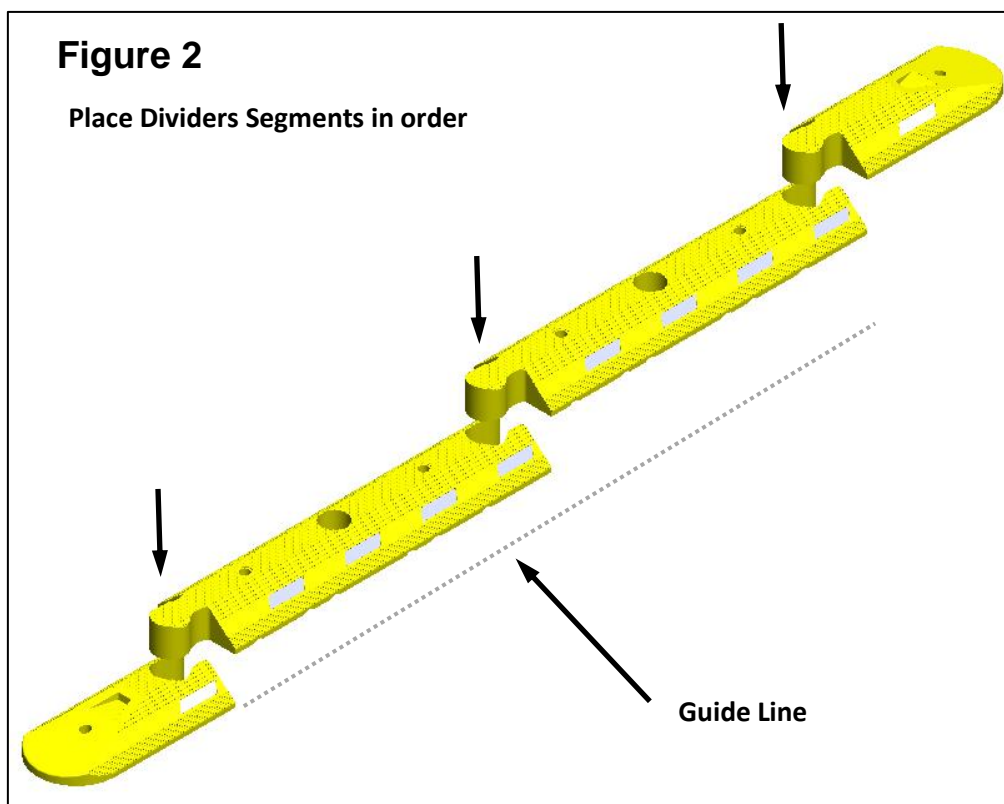
4) Setting the Lane Dividers

Begin an install with the female end piece if possible. Place it in position with the slope toward the beginning of the set up and build the row in the direction of traffic.

If building against the flow of traffic start with the male end piece

Continue placing mid pieces until reaching the end of the installation.

Finally place the other end piece on to finish the divider row. Refer Figure 2

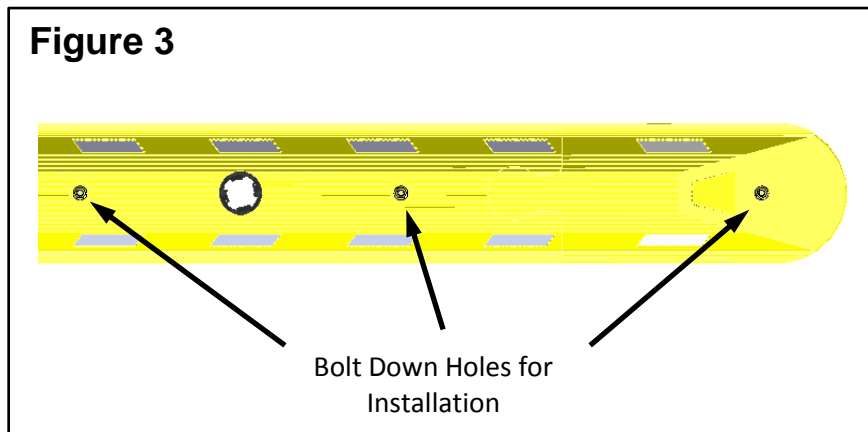


JMB Lane Divider System: Installation Instructions cont.

5) Installing to the Road

JMB Lane dividers can be laid down without fixing in some situations.

If fixing is required or preferred for areas like toll stations and cross over lanes then the lane divider mid segments and end segments have predrilled holes for bolting down to the roadway. There are 2 holes in mid segments and one hole in end segments, Refer Figure 3



JMB Lane dividers can be anchored down by either Sleeved Masonry Anchors (e.g. \varnothing 12 x 100 M10 thread) or Screw In Masonry Anchors (e.g. M12 x 100). See Figure 4 for general details

Fixing holes can be drilled from the top using a \varnothing 12mm drill for both sleeved anchor and screw in anchor types noted above. See Figure 4 for general drilling depth details

The predrilled holes in the rubber dividers are \varnothing 12mm. If you are using larger anchors simply drill out the rubber holes while drilling the anchor holes in the road.

Prior to drilling JMB advises that you mark on the drill the appropriate depth. (i.e. height of the divider (90mm) + required engagement depth to suit the fastener) This ensures the holes are drilled to the correct depth.

Always use a flat washer under the anchor bolt head to ensure the bolt load is spread over the whole bolt down surface

Once drilling is complete insert the masonry anchor into the hole. Tap down into place with a hammer if necessary. (Sleeved anchors only)

Tighten the anchor to the recommended torque. Refer Figure 4

NOTE: Information given for masonry anchors is included as a guide only. Manufactures specifications should always override this information.

JMB Lane Divider System: Installation Instructions cont.

Figure 4

General Information Sleeved Anchors
Ø 12 x 100 (M10 thread) DynaBolt
Drill Hole - Ø12mm x 95mm
Tightening Torque – 55Nm

General Information Screw In Anchors
M12 x 100
Drill Hole - Ø12mm x 100mm
Tightening Torque – 80Nm

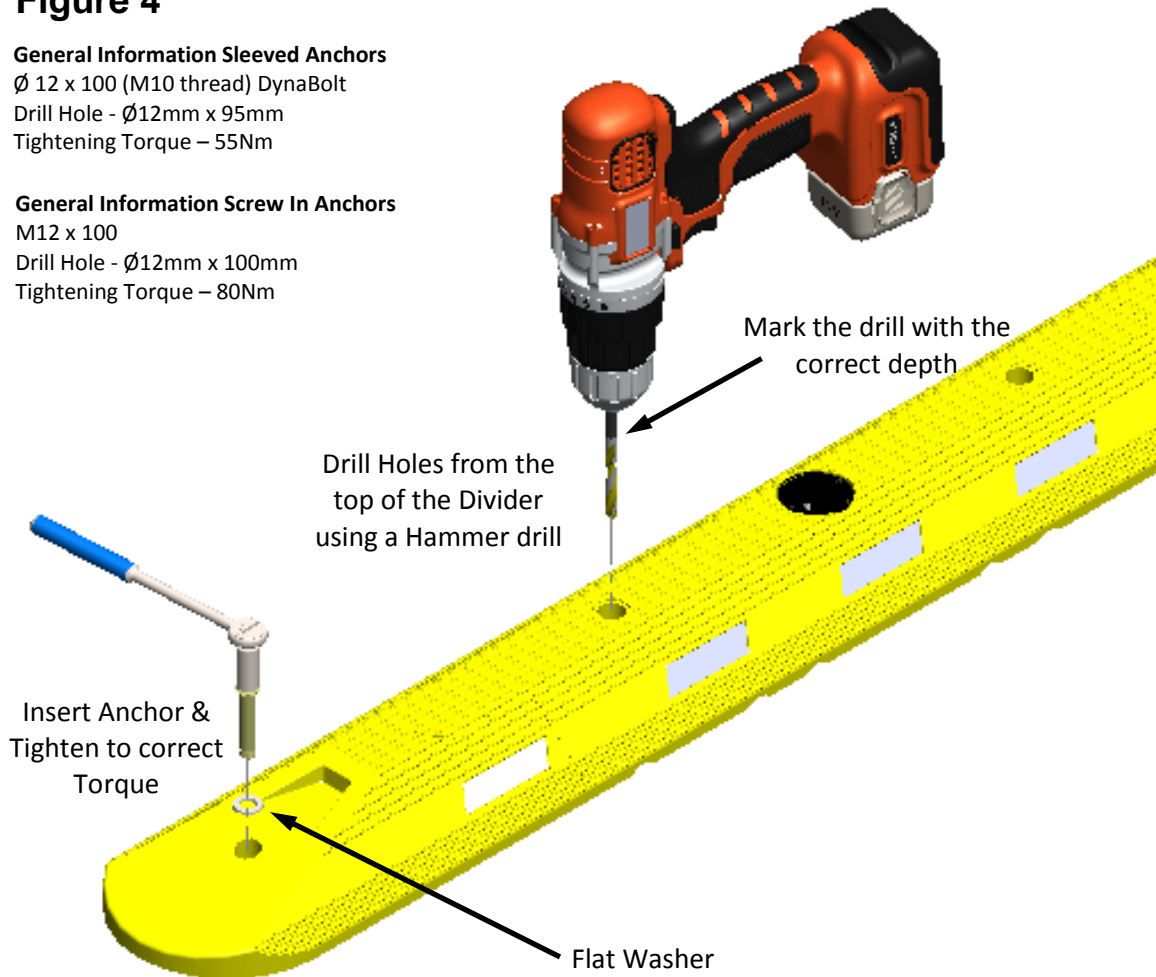
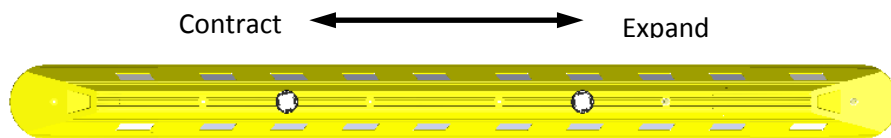


Figure 5



Divider may expand or contract slightly with changes in temperature. **SEE HINT BELOW!**

Hint:

Temperature extremes can cause the curbs to contract and expand, even during short installation times. To combat this anchor bolts should be installed shortly after the each hole is drilled to avoid possible misalignment occurring.

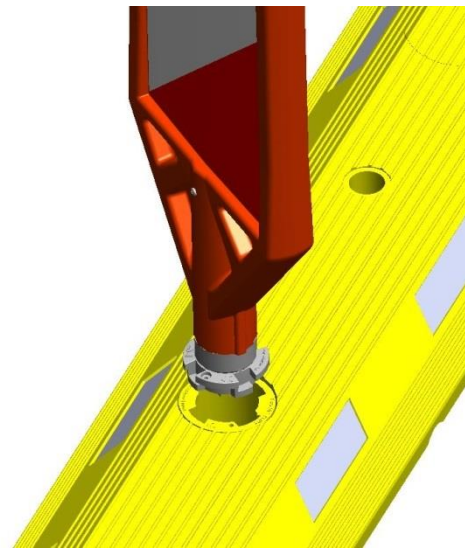
JMB Lane Divider System: Installation Instructions cont.

6) Installing the Blade Delineators

Once the Dividers are secured to the road surface the delineator blades can be fitted. JMB Spring Return Blade Delineators use our simple "Turn and Lock" system to connect to the rubber lane divider. Both Installation and replacement only takes seconds.

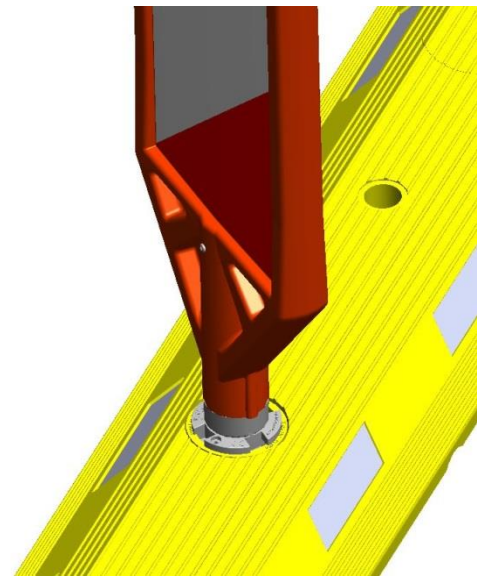
The "Turn and Lock" system is keyed to ensure the correct blade orientation. A locking screw or pin can be used to prevent accidental disconnection. Refer to the following Figures 6 to 9 below.

Figure 6: Step 1



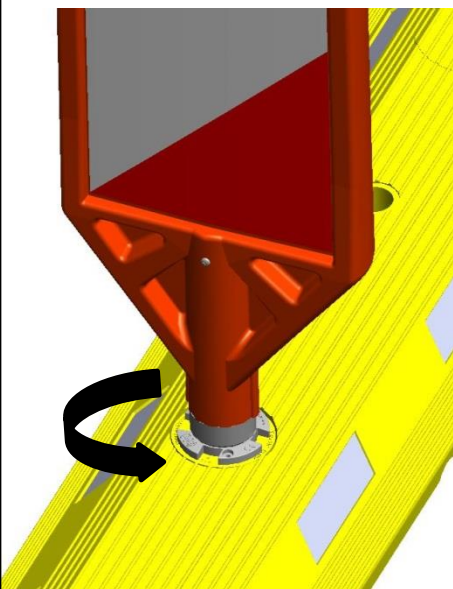
Position the Blade Above the insert point aligning the locating peg

Figure 7: Step 2



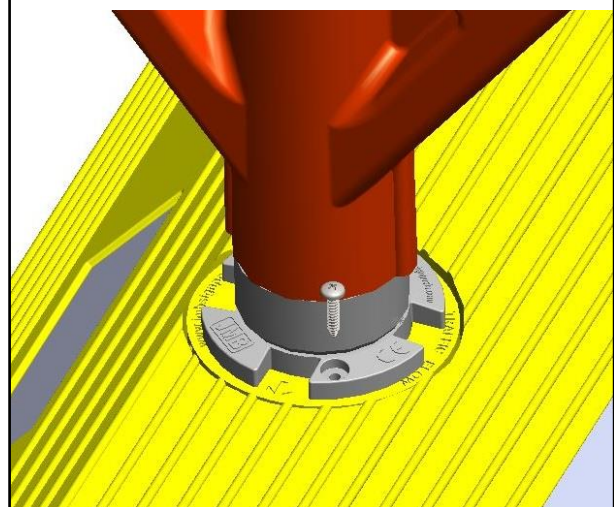
Insert into the hole

Figure 8: Step 3



Turn the blade and lock.

Figure 9: Step 4



Fit a locking Screw or Pin
Screw: Pan Head 6g x 16mm or 7g x 16mm
Pin: 3mmOD x 12mm (minimum)

JMB Lane Divider System: Installation Instructions cont.

7) Completed Installation

Once Installed each Spring Return Blade is passive safe and features full 360° impact recovery.

Delineator Blade removal or replacement take only seconds

Figure 10



Completed Installation

REFERENCE INFORMATION:

General Installation and Dimensional information can also be found in the "Generation 2 Products – Technical Information" drawings Sheets 1 and 2, available for download off the JMB website downloads page.