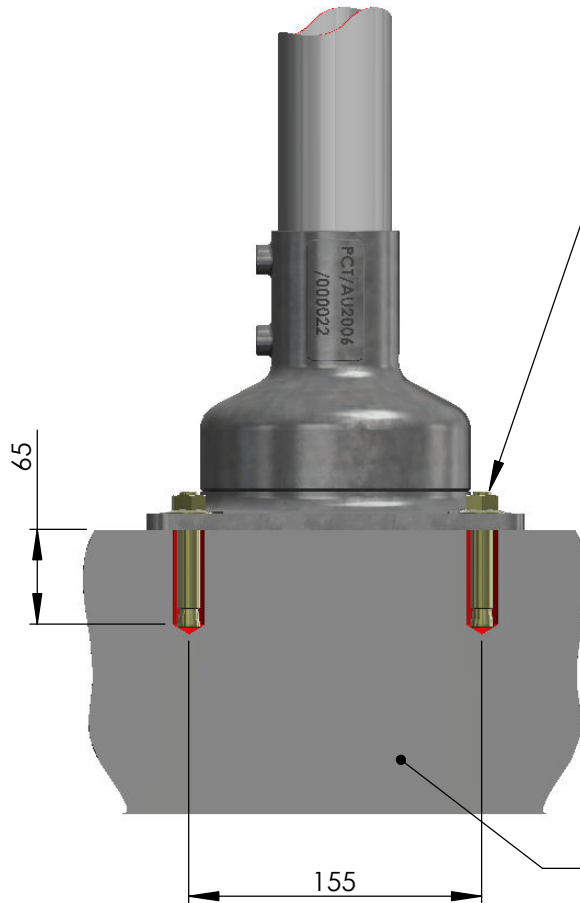


PREFERRED POST ORIENTATION  
FOR DIRECTION OF TRAFFIC



SURFACE MOUNT UNITS CAN BE BOLTED DOWN  
USING JMB **SURFACE MOUNT INSTALLATION KIT.**  
**PRODUCT REF : MK203**

THE INSTALLATION KIT CONTAINS 4 UNITS OF 16 x  
65mm DYNA BOLT CEMENT ANCHORS

GUIDELINES FOR FITTING ANCHOR BOLTS:  
(Manufacturers instruction and local regulations  
should always take precedent over these  
installation guidelines)

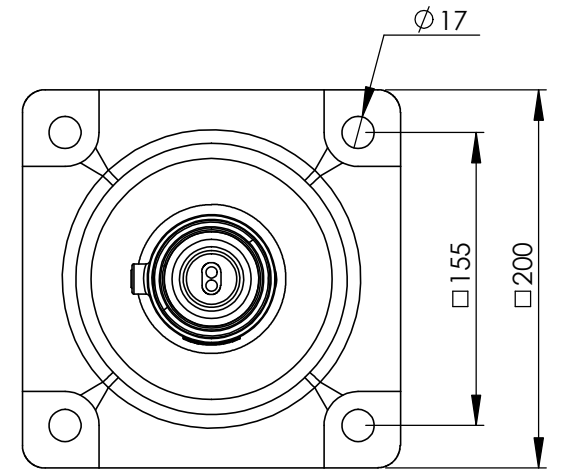
1. DRILL 4 x  $\varnothing 16$  HOLES 65mm DEEP AT 120mm CENTRES
2. TIP: (Use the base unit as a drilling template)
3. CLEAN DUST OUT THE HOLES
4. POSITION THE BASE AND GENTLY TAP THE ANCHOR BOLTS THROUGH THE BASE HOLES USING A SOFT HAMMER
5. TIGHTEN THE NUTS IN A DIAGONAL PATTERN UNTILL ALL ARE FULLY TENSIONED

NOTE 1:

SIMILAR CAPACITY ANCHOR BOLTS THAT USE AN  
M12 OR LARGER THREAD CAN BE SUBSTITUTED

NOTE 2:

IF CONCRETEING A NEW FOOTING, A FOOTING SIZE  
OF 400mm X 400mm X 400mm DEEP USING 10MPa  
IS ADVISED IF NO OVERRIDING LOCAL  
REGULATIONS ARE APPLICABLE




PLAN OF HOLE PATTERN

EXISTING CONCRETE  
(10MPa CONCRETE IF NEW INSTALLATION)

**INFORMATION APPLICABLE TO:**  
**SURFACE MOUNT - SPRING RETURN SIGN POST UNIT**  
**- RED SPRING**

SCALE	NTS
CHECKED	ICB
LAST UPDATE	4/01/2015
DRAWN	Ian Brodie
DATE	06/05/2011

ALL DIMENSIONS IN MILLIMETERS	QUANTITY	1	DO NOT SCALE IF IN DOUBT ASK
MATERIAL	NA		
FINISH	NA		
DESCRIPTION	TALL SPRING RETURN SIGNPOSTS TECHNICAL INFORMATION SHEET 7 SURFACE MOUNT INSTALLATION INSTRUCTIONS		

<b>JMB MANUFACTURING PTY LTD</b> 24 BRIGID BOULEVARD AUSTINE HEIGHTS QLD AUSTRALIA 4300 PH. 07 3814 7882 FAX. 07 3814 7884		
ACAD FILE NAME	SH. 6	
Technical Information 27-06-2014	OF 13	
Part:		