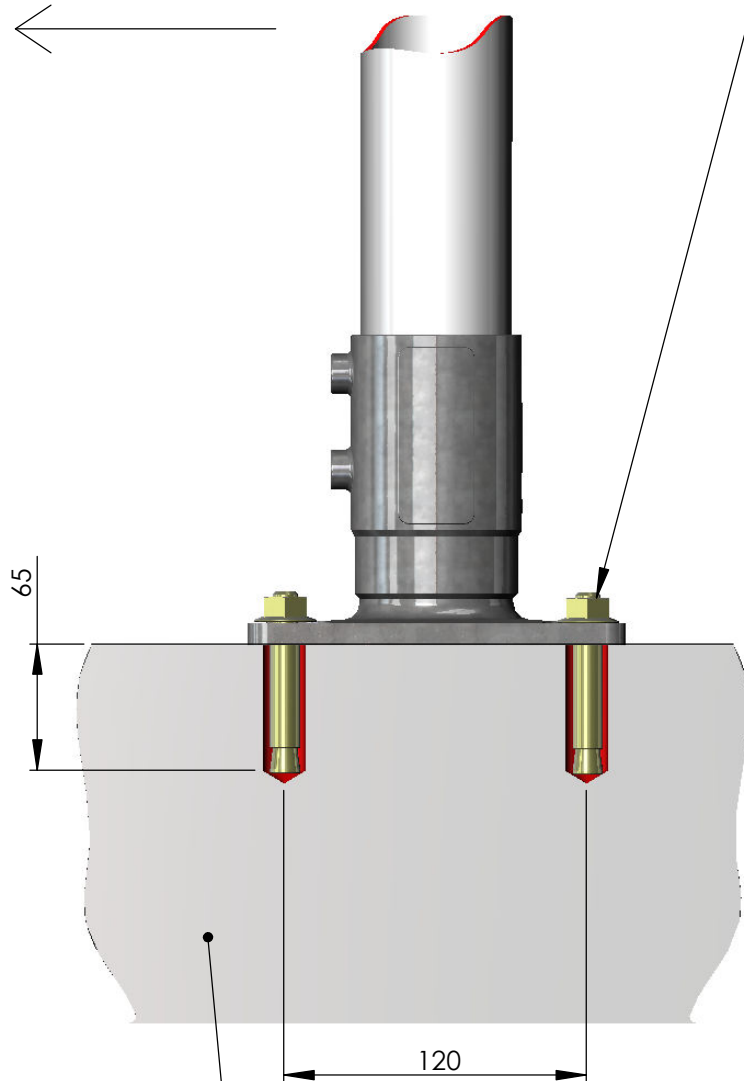


PREFERRED POST ORIENTATION  
FOR DIRECTION OF TRAFFIC



EXISTING CONCRETE  
(10MPa CONCRETE IF NEW INSTALLATION)

**INFORMATION APPLICABLE TO:**  
**SURFACE MOUNT - SPRING RETURN SIGN POST UNITS**  
**- BLUE SPRING**  
**-BLACK SPRING**

SURFACE MOUNT UNITS CAN BE BOLTED DOWN  
USING JMB **SURFACE MOUNT INSTALLATION KIT.**  
**PRODUCT REF : MK203**

THE INSTALLATION KIT CONTAINS 4 UNITS OF 16 x  
65mm DYNA BOLT CEMENT ANCHORS

**GUIDELINES FOR FITTING ANCHOR BOLTS:**  
(Manufacturers instruction and local regulations  
should always take precedent over these  
installation guidelines)

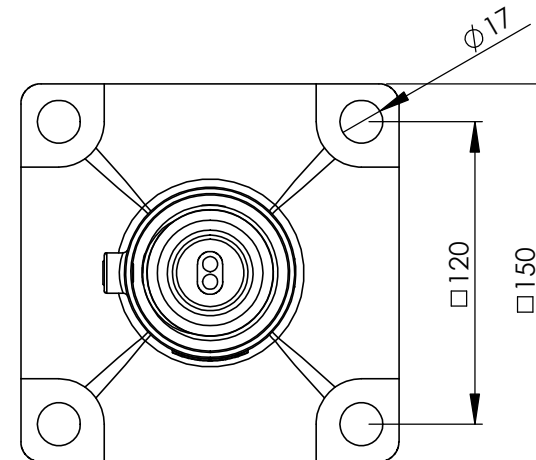
1. DRILL 4 x  $\varnothing 16$  HOLES 65mm DEEP AT 120mm  
CENTRES
2. TIP: (Use the base unit as a drilling template)
3. CLEAN DUST OUT THE HOLES
4. POSITION THE BASE AND GENTLY TAP THE  
ANCHOR BOLTS THROUGH THE BASE HOLES  
USING A SOFT HAMMER
5. TIGHTEN THE NUTS IN A DIAGONAL PATTERN  
UNTILL ALL ARE FULLY TENSIONED

**NOTE 1:**

SIMILAR CAPACITY ANCHOR BOLTS THAT USE AN  
M12 OR LARGER THREAD CAN BE SUBSTITUTED

**NOTE 2:**

IF CONCRETING A NEW FOOTING, A FOOTING SIZE  
OF 400mm X 400mm X 300mm DEEP USING 10MPa  
IS ADVISED IF NO OVERRIDING LOCAL  
REGULATIONS ARE APPLICABLE



PLAN OF HOLE PATTERN

|                |            |
|----------------|------------|
| SCALE          | NTS        |
| CHECKED        | ICB        |
| LAST<br>UPDATE | 5/01/2015  |
| DRAWN          | Ian Brodie |
| DATE           | 04/05/2011 |

|                                  |   |   |                                 |
|----------------------------------|---|---|---------------------------------|
| ALL DIMENSIONS<br>IN MILLIMETERS | QUANTITY  | 1 | DO NOT SCALE<br>IF IN DOUBT ASK |
| MATERIAL                         | NA  |   |                                 |
| FINISH                           | NA  |   |                                 |
| DESCRIPTION                      | SPRING RETURN SIGNPOSTS<br>TECHNICAL INFORMATION SHEET 1<br>SURFACE MOUNT INSTALLATION INSTRUCTIONS |   |                                 |

**JMB MANUFACTURING PTY LTD**  
24 BRIGID BOULEVARD  
AUSTINE HEIGHTS  
QLD AUSTRALIA 4300  
PH. 07 3814 7882  
FAX. 07 3814 7884



ACAD FILE NAME  
Technical Information 27-06-2014

Part:

SH. 1

OF 13